



## Traverse des Sioux Library System

1400 Madison Ave., Suite 622  
Mankato, MN 56001-5488

PHONE: 507-625-6169  
Toll-Free: 800-450-6169  
FAX: 507-625-4049  
[www.tds.lib.mn.us](http://www.tds.lib.mn.us)

11/06/08

### What to Do If the All Profile is Disabled

Occasionally the Microsoft Toolkit will not have enough time to complete all updates. Should this happen, the Public Access login (**ALL**) will be disabled and you will not be able to log in as All.

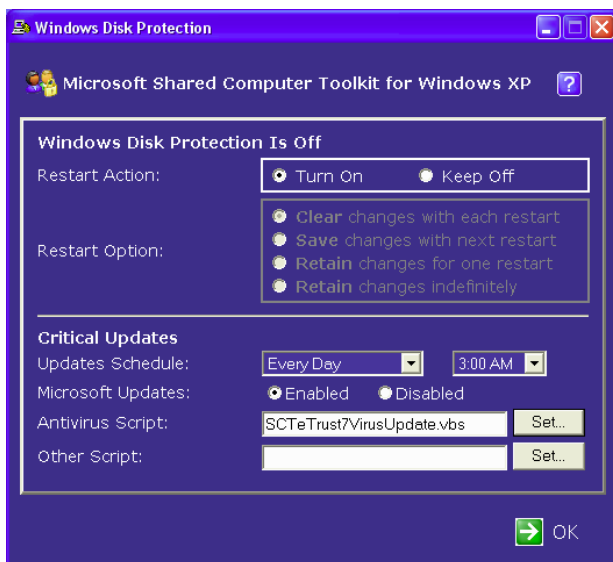
- Start the computer
- The log-in to **All** will fail (the computer will not log in automatically)
- When the “Log into Windows” dialog appears -- log in as exec

### Set Windows Disk Protection to Save Changes

- When the Windows Disk Protection dialog box in the lower right of the screen appears...



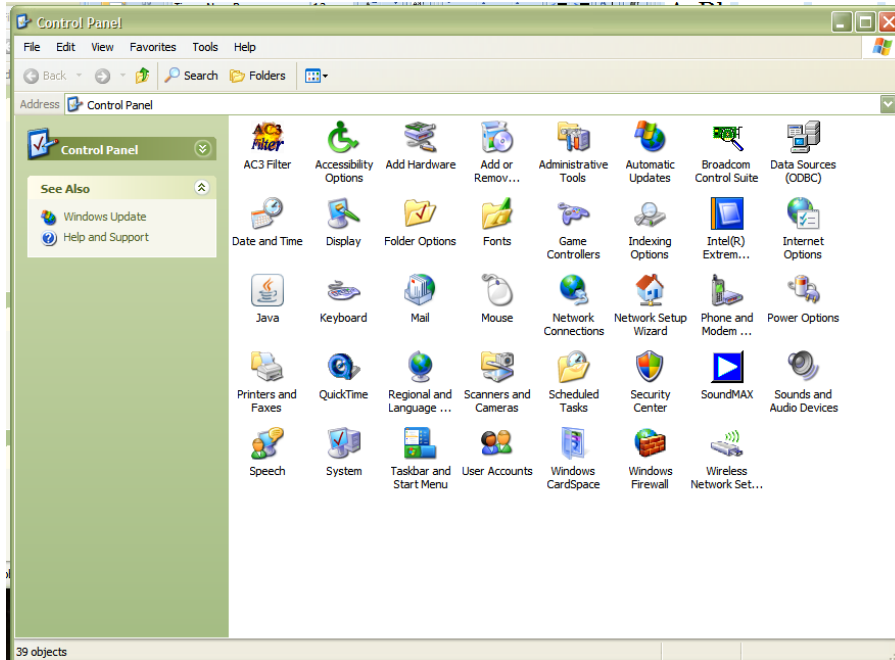
- Click the Open Windows Disk button
- *Windows Disk Protection* will open



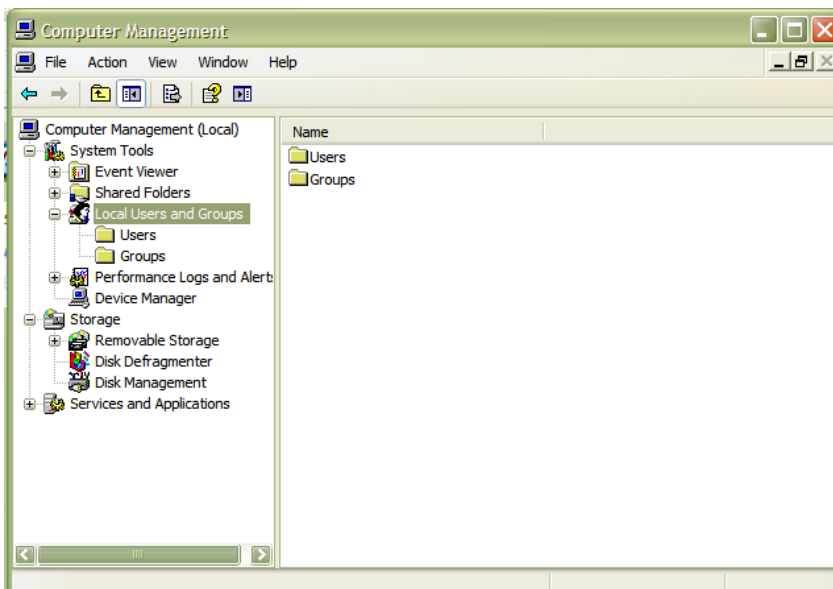
- Click on *Save changes with next restart*
- Click “OK”

## Re-enabling the ALL Profile

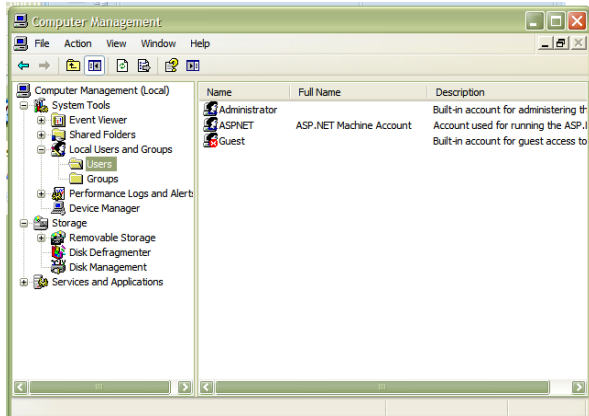
- Click the Start Menu
- Choose Control Panel
- Double-Click “Administrative Tools” in the top row



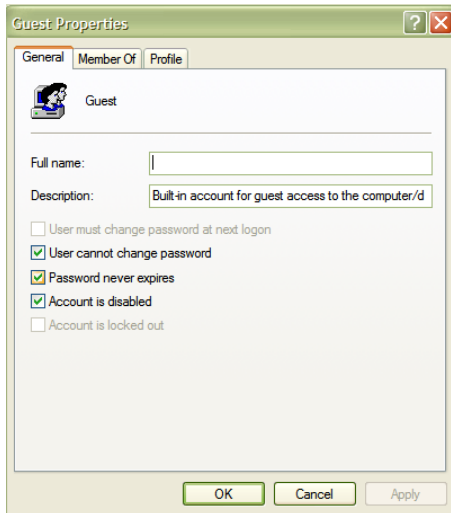
- In “Administrative Tools” double-click “Computer Management”
- Double-click *Local Users and Groups*



- Click once on the *Users* Folder
- The list of computer users will appear in the right pane



- If the **All** profile has been disabled, it will have an X in a red circle superimposed on it
- Right Click on the All Profile
- Choose Properties from the context menu
- There will be a check in the “Account is disabled” box



- Uncheck this box
- Click OK
- Close Computer Management
- Close Administrative Tools
- Close the Control Panel
- Restart – the Disk Protection will come on automatically